



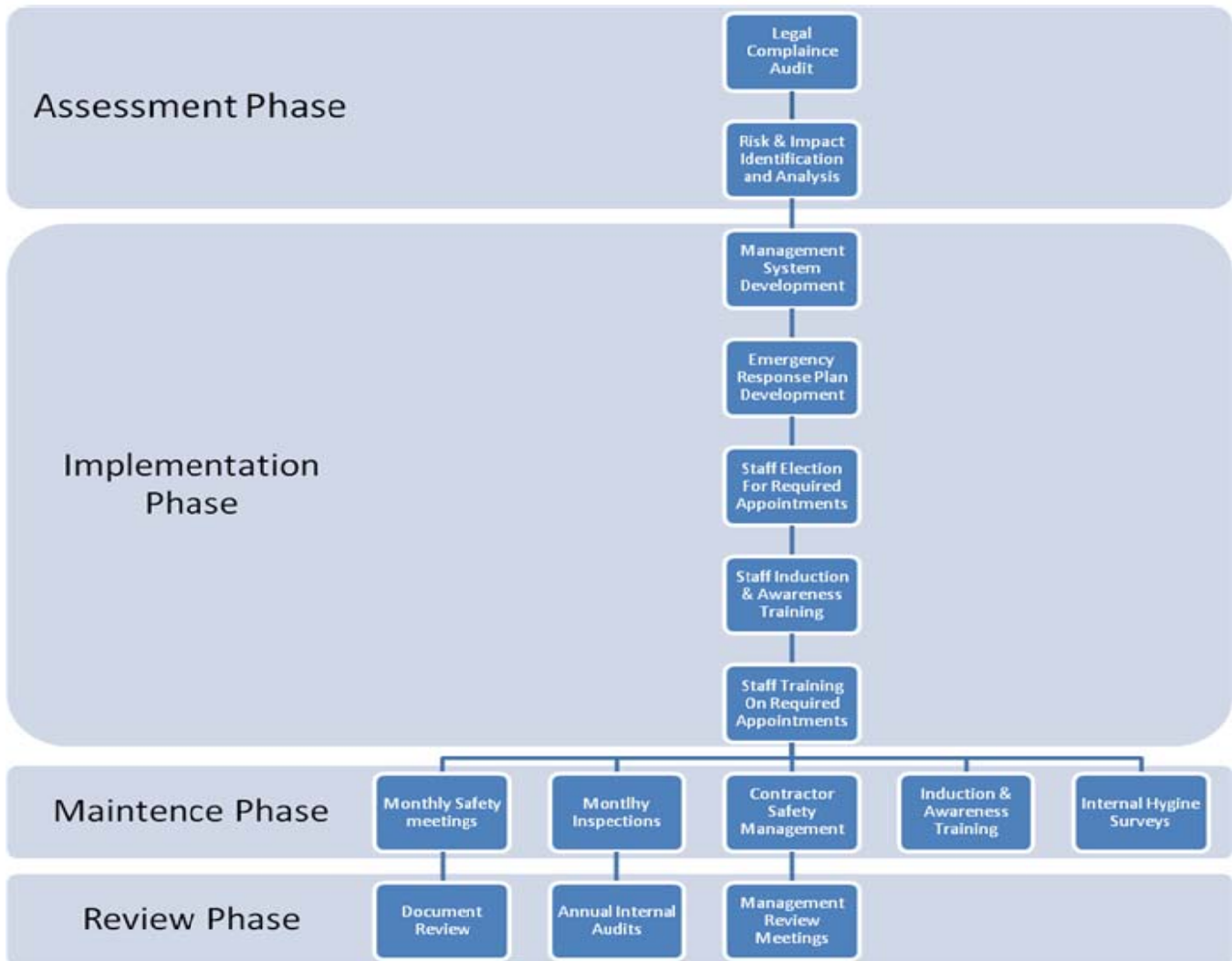
# Resuscitation through Education

Tel: 011 782-8836  
 Fax: 086 518 5519  
 E-mail: [smart@altonet.co.za](mailto:smart@altonet.co.za)  
 Web: [www.smartresponse.co.za](http://www.smartresponse.co.za)  
 DOL CI No: 495  
 CC Reg No: 2006/146819/23

## Total Health, Safety and Environmental Management (THSEM)

We understand that occupational health and safety, environmental, emergency and quality management -are complex topics that are very often misunderstood, difficult to interpret and often simply ignored. Our on-site consulting will assist in the implementation and roll out of new health and safety, environmental, emergency or quality management systems and offers advice on the everyday running of existing systems.

In addition to the on-site services we also offer 24 hour telephonic consulting as well as emergency advice on situations that occur in the workplace.



## **Total Health, Safety and Environmental Management (THSEM)**

THSEM includes a full array of products and services to ensure that a company is fully compliant with the Occupational Health and Safety Act, Local and Municipal regulations, OHSAS 18001 and ISO 14001 standards.

This is done in the following manner:

- An initial legal compliance audit is done to ascertain the company's overall strengths and weaknesses.
- A set of policies and procedures, also termed a management system, will be drafted for the company specific to the nature and scope of the work being performed on the premises. These policies and procedures will be presented to the CEO of the company for approval and implementation by management.
- In addition to the policies and procedures an emergency response plan will be drawn up dealing with the exact floor plan of the premises concerned. This emergency response plan will include situation specific procedures for the major role players in an emergency reaction team.
- Once policies and procedures have been approved, a half day induction training programme will be developed and implemented to ensure that all employees and contractors are made aware of the new documents and their responsibility towards the newly implemented management system.
- Those who show interest in the safety and emergency field will be nominated in accordance with the management system as health, safety and environmental representatives, first aid providers or fire team members. Training will then be provided for the respective candidates on the chosen path. The training provided will be in accordance with above mentioned emergency response plan as well as the policies and procedures.
- All equipment necessary for the emergency teams to conduct their work will be provided and the teams will be trained on how to use the items supplied.
- Once all of the systems have been implemented a follow up audit will be conducted to provide a before and after look into the effectiveness of the systems implemented.
- Follow up services include setting up of health, safety and environmental committees and assisting with the running of these meetings, independent health, safety and environmental inspections, bi-annual emergency evacuation drills, inspection and annual servicing of emergency equipment.

### **Legal compliance audits**

A Legal Compliance Audit is an audit conducted on a company to establish the level of compliance of that organization with regard to the Occupational Health and Safety Act, the associated regulations and Local Municipal by-laws.

This audit is conducted over a number of days dependent on the size of an organization and once the audit is completed a full report is presented to the company outlining the areas that require immediate attention, areas that require attention and areas that are compliant. A grading is then assigned to each department and the organization as a whole.

### **Risk assessment**

At The SMART Solution we believe that you should always be aware of your surroundings and threats that may be present. That is why we offer customized risk assessment for the corporate, industrial or domestic environment.

We conduct an on-site full assessment of all of the risks and threats present taking into account such things as geographic location, structure type, emergency personnel and systems present. Once the complete assessment has been done a full report is submitted to the client so that they can see how to reduce their risk profile

### **Management system development and implementation**

Policies and procedures form a part of daily work practices. It is important that an organization has a detailed yet simplistic set of policies governing the goals that an organization wishes to strive towards and a set of procedures governing how to accomplish the goals set in the policy. These policies and procedures are the corner stone of any ISO 9001 Quality management, ISO 14001 Environmental management or OHSAS 18001 Occupational health and safety

management systems. Policies and procedures are also used to manage a number of other types of systems including the SANAS R47 BBBEE verification agency management systems.

Once a set of policies and procedures has been developed they must be implemented and all control measures must be put in place to monitor the performance of your systems. This forms a vital part of updating your systems and ensuring that they remain current.

Most international and many local organisations are requesting to do business with companies that have these policies and procedures in place so to avoid losing business ensure that you have yours.

### **Emergency response planning**

Local Municipal by-laws state that every company in the Ekurhuleni, Johannesburg, and Mogale and Tshwane municipalities must have an Emergency Evacuation Plan in place that meets the minimum requirements of the by-laws. There are a number of other municipalities which have similar regulations in place. © The SMART Solution – 2012 The SMART Solution Portfolio 2012/03 Page 7 of 19. In addition to the legislated requirements, clause 4.4.7 of the ISO 14001 and OHSAS 18001 standards requires an organisation to compile and practice an emergency response plan that is able to deal with all eventualities present within the organisation. Our response plans deal with 17 modern day risks and threats including mass action and terrorist threats.

### **Emergency equipment supply and inspection**

Firefighting equipment is to be serviced every 12 months in accordance with the SAQCC fire's minimum regulations. This service must be done by a certified fire service technician. Not only does the firefighting equipment need to be serviced every 12 months but also needs to be hydro-statically tested every 36 months in accordance with the Occupational Health and Safety Act, Pressurized Equipment Regulations.

First aid kits are also required to be stocked to the requirements of the General Safety Regulations of the Occupational Health and Safety Act. The SMART Solution can assist in both regards with monthly inspection of equipment and servicing or replacing of equipment.